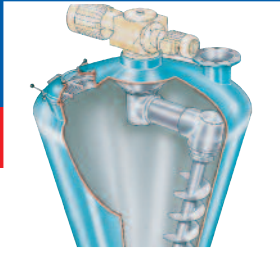


MIXING AND BLENDING EQUIPMENT AND SYSTEMS

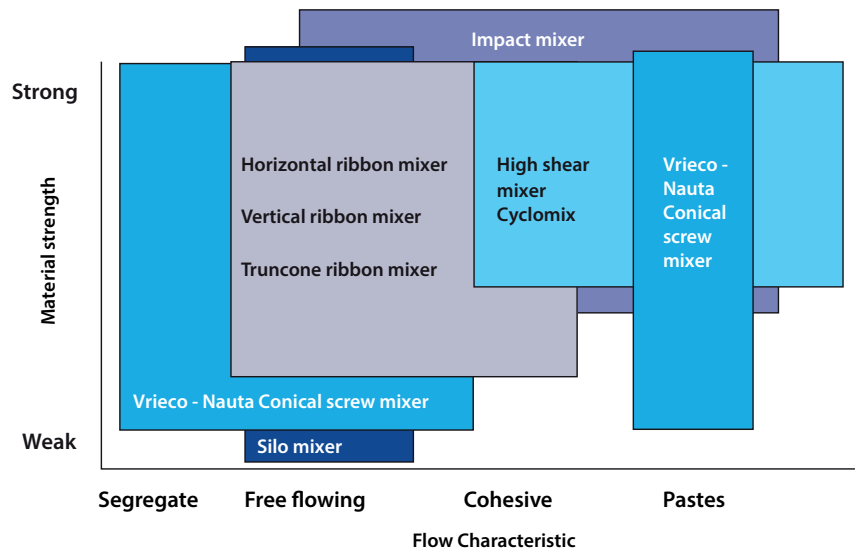


Hosokawa Micron Ltd offers a wide range of innovative mixing equipment and technologies for powders, pastes, slurries and liquids, extending from laboratory and pilot plant units through to full scale production mixers and systems.

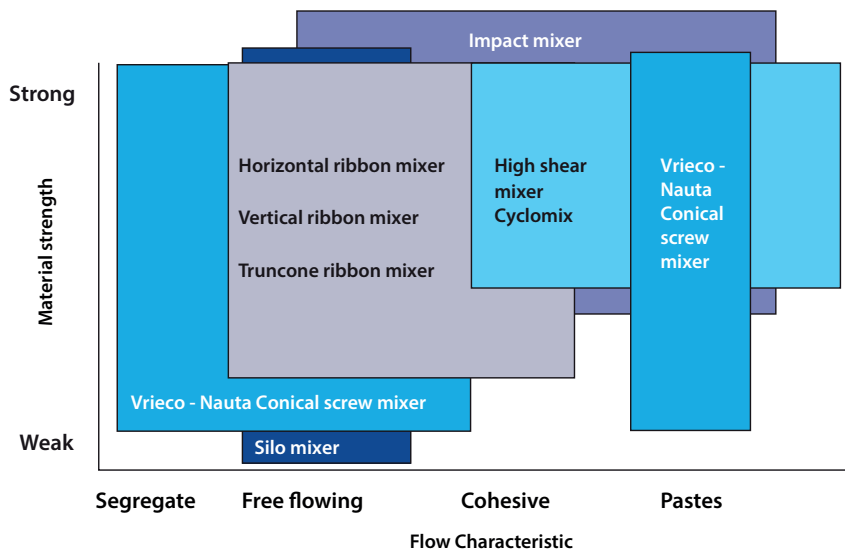
Within our mixer portfolio we can deliver wet or dry mixing solutions to suit your end material requirements and advise on the most suitable machine type to meet your batch or continuous production needs.

Our mixing technologies can be used for applications including homogenising, improving product quality, coating particles, fusing materials, wetting, dispersion of liquids, altering functional properties and agglomeration.

CONTINUOUS MIXING EQUIPMENT SELECTION



BATCH MIXING EQUIPMENT SELECTION



Our engineering expertise extends beyond mixing and across a broad range of technologies & applications. It is our range of expertise and resources that set us apart from other companies. We make and supply equipment, turnkey systems and processing solutions that deliver production, product and marketing advantages for our customers through technological innovation and process line capability.

Whilst a comprehensive product list from the Hosokawa Micron and Schugi brand ranges deliver unique mixing technologies the Vrieco Nauta® conical mixer remains at the heart of Hosokawa Micron Ltd's portfolio of mixing technology. Continuously developed to retain its industry standard reputation for fast and intensive mixing, the Vrieco Nauta® range of mixers is able to handle volumes from 5-60,000 litres.

Vrieco Nauta® Conical Mixer

A conical screw, batch mixer designed for segregative, free-flowing powders, slurries and pastes. Famous for its low-intensity mixing and a pioneer in mixing technology it is especially suited to delicate products and processes where very accurate results are required and is synonymous with gentle mixing of large volumes of up to 100,000 litres, delivering:

- Low power consumption
- Fast mixing times
- Minimum heat generation
- Self emptying, minimum product retention

Suitable for a wide range of processing activities including:

- Moistening of powders
- Coating
- Granulation
- Drying by means of heat input at atmospheric conditions or in combination with vacuum and possible liquid recovery
- Coating of solids with liquids (with intensifier)



Vrieco Nauta Cyclomix

A revolutionary, compact, multi-purpose, high-speed, intensive paddle mixer and agglomerator designed for mixing cohesive powders with liquids or melt binders. Suitable for an extensive range of applications this mixer handles pastes, slurries and liquids with ease due to its combination of high-shear and high-impact forces.

- Fast mixing times (from 30 seconds to 5 minutes)
- Fully self-emptying vessel
- No bearings or seals in the product zone
- Good control of product temperature

This mixer offers a high level of homogeneity in the end product as frequently demanded by the food, chemical, plastic, toner, mineral, cosmetic and pharmaceutical industries.

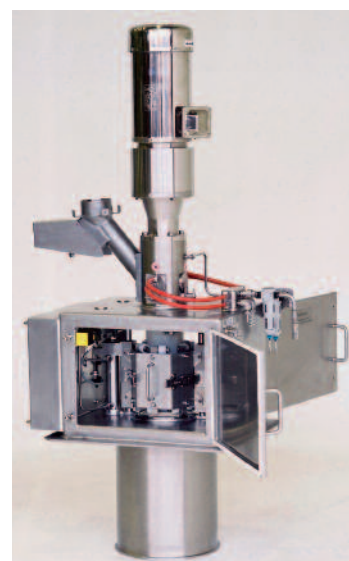
Schugi Flexomix

The Schugi Flexomix is a unique vertical continuous mixer and agglomerator, developed to achieve a highly homogeneous mixture of powders and liquids. It is unlike any other continuous mixer with its vertical cylindrical chamber and vertical rotating shaft.

Its high rotational speed and turbulent mixing keep the mixer chamber clean; it provides accurate dosing of both liquid and solid components and is suitable for even the stickiest of media.

The Schugi Flexomix can be used for a variety of applications, including:

- Agglomeration of fine powders for compaction
- Hydration of phosphates
- Production of detergent powders
- Finishing of filter cakes
- Instantising of drinking chocolate
- Humidifying products (e.g. pesticides) before extrusion



HOSOKAWA MICRON LTD

Rivington Road, Runcorn WA7 3DS Tel: +44 (0)1928 755100 • e.mail: info@hmluk.hosokawa.com • www: hosokawa.co.uk

PROCESS TECHNOLOGIES FOR TOMORROWSM