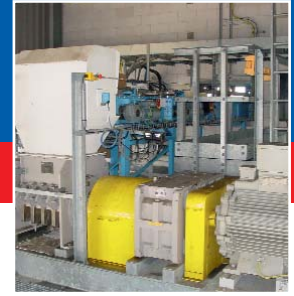
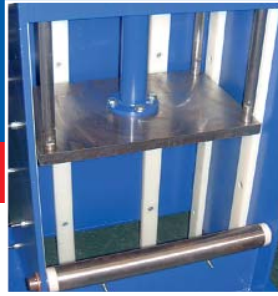
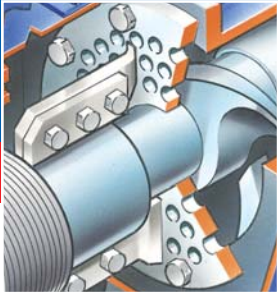


MICRON RUBBER CHOPPER AND BALE RAM FEEDER



Natural and synthetic rubbers are usually delivered in 'bales'. These have to be size reduced to facilitate blending with other ingredients or dissolving. The size of the machine required is determined by the thickness of the bale and the customer's throughput requirement – see table over the page.

How it Works

The Hosokawa Micron Rubber Chopper can shred bales of rubber and plastic in seconds at shaft powers to 3kw/rpm and shaft torque to 25kNm (or 45kNm in the heavy-duty design). The machine operates at low speeds (typically 40 rpm) and generates enormous torque but with minimal noise, wear, maintenance and product temperature rise.

A bale is dropped into the hopper inlet, the sharp edges of rotating hammers bite into the bale and shear it into chunks against the anvils.

As the chunks are pushed through the barrel they are repeatedly chopped into smaller pieces until they pass through the orifice plate. Cut-off knives shear the product as it exits the plate governing the final size of the material being extruded.

Various drive assemblies and chopper configurations are available to meet a variety of production requirements.

ATEX Certified as required for European Ex-area installation.



Features:

- Low speed, high torque
- Rugged construction, low maintenance
- Minimised noise, minimal wear
- Low temperature rise
- Energy efficient
- Controlled end particle size

Typical Applications:

- Butadienes
- High Impact Polymers
- Isoprenes
- Nitriles
- Styrene Butadiene
- Smoke Sheet
- Butyrates
- Natural Rubbers
- Butyls
- Reclaim

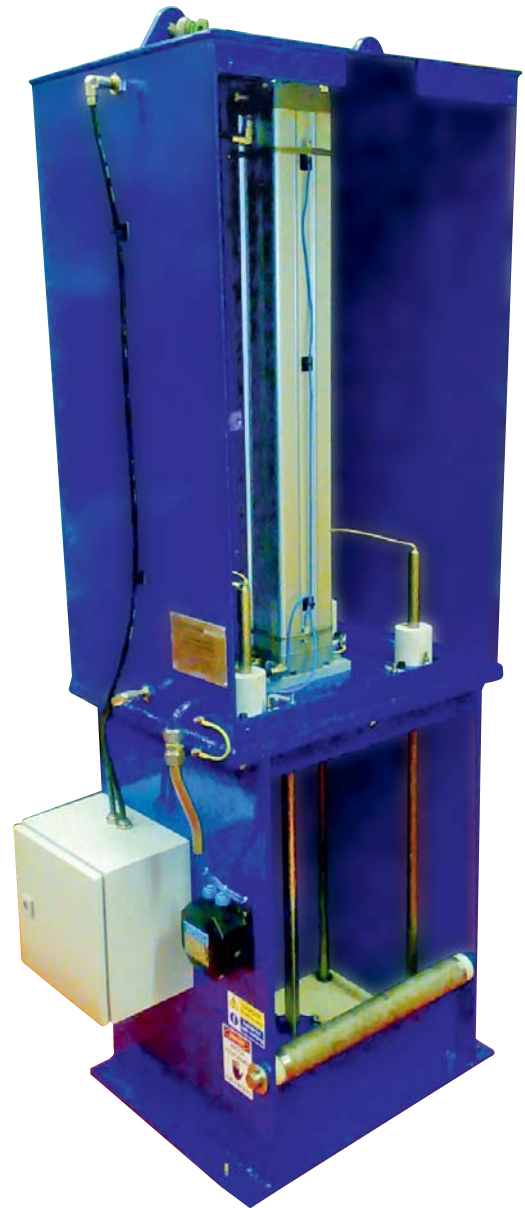
RUBBER CHOPPER BALE RAM FEEDER UNIT

Designed for the positive and automated feeding of problematic grades of synthetic rubber.

Providing Chopper performance increase, higher machine utilisation, no operator intervention.

Features:

- Heavy duty manufacture
- Oversize pneumatic cylinder operation for maximum bale transit
- Low maintenance
- Ability to be installed into electrically hazardous or zoned installation areas
- No requirement for chopper unit main drive motor upgrade nor machine speed increase
- Standard fit to 15 inch Chopper unit without modification
- Supplied complete with pneumatic control and interface
- Corrosion resistant design and manufacture
- ATEX certified design available for European installations



Specification

Model No.	Rotor Diameter mm	Feed Opening mm	Body Length mm	Kw	Torque up to
PB 15	380	380x560	710	110	25kNm
PB15 (HD)	380	380x560	710	225	45kNm

Typical bale size handled

Model No.	Width	Length	Thickness	Weight
PB15/ PB15(HD)	380	700-750	150-180	up to 35kg



HOSOKAWA MICRON LTD

Rivington Road, Runcorn WA7 3DS Tel: +44 (0)1928 755100 • e.mail: info@hmluk.hosokawa.com • www: hosokawa.co.uk

PROCESS TECHNOLOGIES FOR TOMORROWSM